

Digital CMOS Video Cameras



Highlights

- 1, 3 and 6 megapixel resolution
- Perfect for documentation and archiving applications
- Fast frame rates

Applications

Brightfield, Darkfield, DIC, Live Cell Imaging, Histology, Pathology, Cytology, Defect Analysis, Semiconductor Inspection, Metrology

It is an excellent fit for documentation and archiving applications.

Camera Specifications

Mega pixels	Resolution	Sensor	FPS	Bit Depth	Read Noise	Model Number
DK Series						
1.3	1280X1024	1/2" CMOS	15	8 or 10	20 e-	DK1000
3.1	2048X1536	1/2" CMOS	6	8 or 10	20 e-	DK3000
6.6	3000x2208	> 2/3" CMOS	5	8 or 10	20 e-	DK6000

Auto/Manual Exposure

Auto/Manual White Balance

Programmable Gain, 1 to 10X Optimizable

C-Mount Lens Aperture

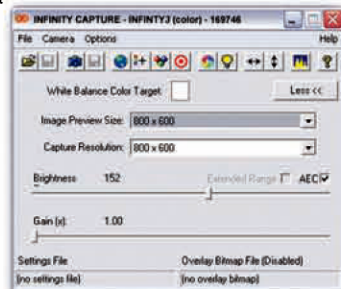
USB 2.0 High-Speed Interface

Power: USB Bus Power or optional 5VDC@500ma Power Supply

Capture Software

This intuitive user interface includes all of the basic features needed to control the camera and capture images. Features include:

- Real Time Video Preview
- Separate Preview and Capture Controls
- Automatic/Manual Exposure
- Automatic/Manual White Balance
- Manual Hue and Saturation
- Manual Contrast/Brightness/Gamma
- Manual Preview Quality
- Manual Preview Zoom Level
- Multiple Image Averaging
- Preview Histogram
- Global Electronic Gain
- User Defined Light Source
- Flat Field Correction
- Highlight Saturated Pixels
- Overlay Bitmaps
- Alpha Blended Bitmaps



Also included is a TWAIN interface, which allows the camera to be used with 3rd party software applications.

MEIJI TECHNO AMERICA

3010 Olcott Street
Santa Clara, CA 95054-3207
800-832-0060
www.meijitechno.com
sales@meijitechno.com

